

# Zigbee Temperature Humidity Sensor



\*Please read this manual carefully before use and keep it for future reference

## Product Parameters

Product parameter: DC3V LR03

Quiescent current:  $\leq 10\mu\text{A}$

Alarm current:  $\leq 15\text{mA}$

Low voltage and undervoltage:  $\leq 2.6\text{V}$

zigbee working frequency:

2.400GHz-2.484GHz

Detection temperature:  $-10^{\circ}\text{C}\sim+60^{\circ}\text{C}$

Detection humidity: 0-100%RH

Working temperature:  $-10^{\circ}\text{C}\sim+50^{\circ}\text{C}$

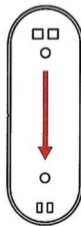
Working humidity: maximum 95%RH

01

## How to use:

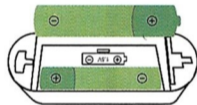
**Note:** This device have to connect Zigbee gateway to work. you must have a Zigbee gateway that is connecting wifi success before uses this sensor.

1. Push the mounting bracket upward and take out the bracket, then insert the battery.



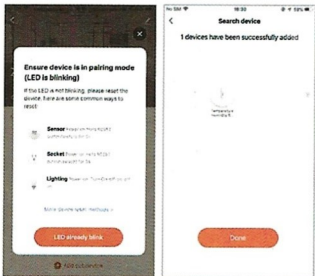
02

2. Put the battery into the battery bin and place it according to the graphics in the battery bin. After two batteries are loaded, the indicator lights are always on and then off.



03

3. Click enter Gateway homepage by APP → Add devices → Add new devices → Long press "RESET" key of sensor by a pin for more than 5 seconds until the indicator light flashes quickly → Discovering nearby devices → Confirm



04

4. It shows a icon on homepage when the temperature humidity sensor connection success with Gateway , click icon to check datas of temperature and humidity.

**Notes: It detects temperature and humidity once for every 5 minutes.**

It reports datas to Cloud once for very 30 minutes (but it also reports at once if detects changing over  $\pm 0.6^{\circ}\text{C}$  of temperature or  $\pm 6\%$  RH of humidity, otherwise, keep 30 minutes)



05

06